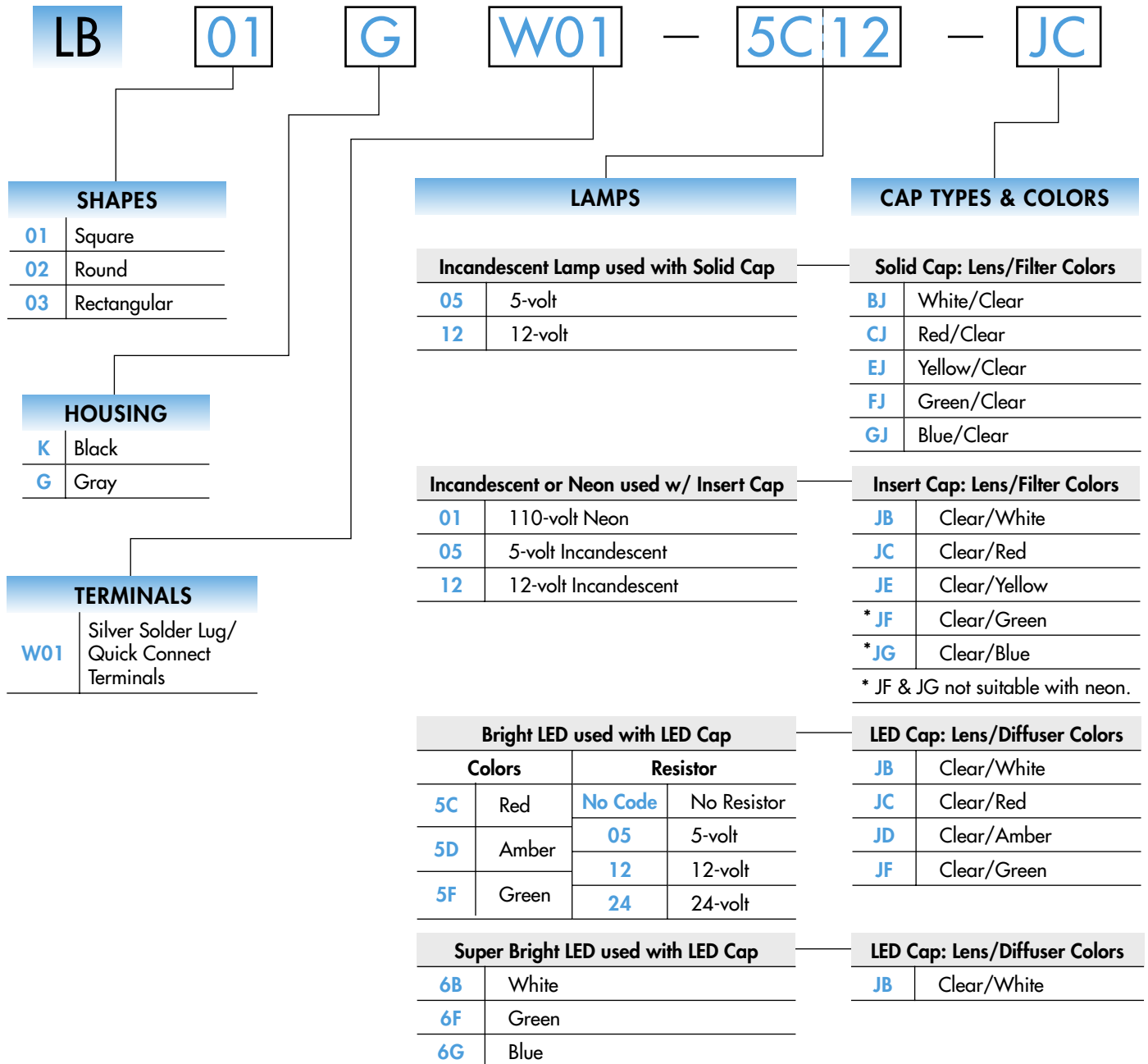


### TYPICAL INDICATOR ORDERING EXAMPLE



### DESCRIPTION FOR TYPICAL ORDERING EXAMPLE

#### LB01GW01-5C12-JC

Clear Cap with Red Diffuser

Red, 12-volt,  
Bright LED with Resistor

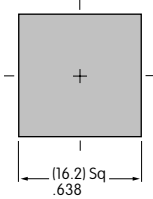
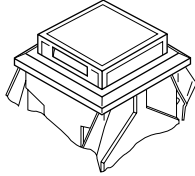
Square Shape and  
Gray Housing

Silver Solder Lug/  
Quick Connect  
Terminals

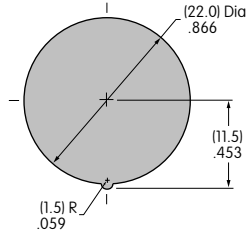


### SHAPES & PANEL CUTOUTS

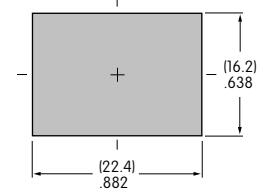
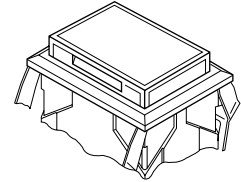
**01** .622" (15.8mm)  
Square



**02** .854" (21.7mm)  
Round



**03** .622" x .866" (15.8mm x 22.0mm)  
Rectangular



Panel Thickness: .039" ~ .157" (1.0 ~ 4.0mm)

### HOUSING

Housing Colors Available:



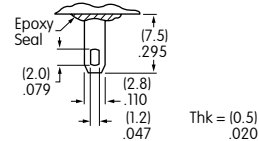
Black



Gray


### TERMINALS

**W01** Silver Solder Lug/.110" (2.8mm) Quick Connect




### LAMP CODES & SPECIFICATIONS

#### Incandescent Lamp for Solid Colored and Colored Insert Caps

<b>AT607</b>   T-1 Bi-pin		<b>05</b>	<b>12</b>	
	Voltage	V	5V AC	12V AC
	Current	I	115mA	60mA
	Endurance	Hours	7,000 average	
	Ambient Temp. Range		-25°C ~ +50°C	



#### Neon Lamp for Colored Insert Cap


<b>AT607N</b>   T-1 Bi-pin		<b>01</b>	
	Voltage	V	110V AC
	Current	I	1.5mA
	Endurance	Hours	10,000 average
	Ambient Temp. Range		-25°C ~ +50°C
	Recommended Resistors: 33K ohms for 110V AC; 100K ohms for 220V AC		

The electrical specifications shown are determined at a basic temperature of 25°C.

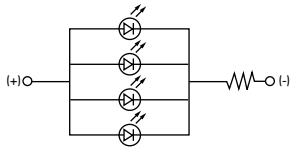
### LED COLORS & SPECIFICATIONS

The electrical specifications shown are determined at a basic temperature of 25°C. Polarity marks are on the device.  
 If the source voltage exceeds the rated voltage, a ballast resistor is required.  
 The resistor value can be calculated by using the formula in the Supplement section.  
 Additional lamp detail is shown in the Accessories & Hardware section.

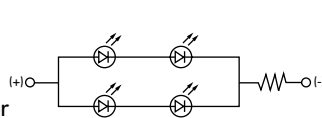
		Bright LED without Resistor					
		Red	Amber	Green	No Code No Resistor		
		5C	5D	5F	Red	Amber	Green
<b>AT635</b>  LEDs are colored in OFF state.     T-1 1/2 Bi-pin	Color Codes						
	Forward Peak Current	$I_{FM}$			30mA	30mA	30mA
	Continuous Forward Current	$I_F$			20mA	20mA	20mA
	Forward Voltage	$V_F$			1.9V	2.0V	2.1V
	Reverse Peak Voltage	$V_{RM}$			5V	5V	5V
	Current Reduction Rate Above 25°C	$\Delta I_F$			0.42mA/°C	0.42mA/°C	0.42mA/°C
	Ambient Temperature Range				-25° ~ +50°C		

		Bright LED with Resistor					
		Red	Amber	Green	Resistor Codes		
		5C	5D	5F	05	12	24
<b>AT627 with Resistor</b>    T-1 Bi-pin	Color Codes:						
	Forward Peak Current	$I_{FM}$			—	—	—
	Continuous Forward Current	$I_F$			52mA	26mA	13mA
	Forward Voltage	$V_F$			5V	12V	24V
	Reverse Peak Voltage	$V_{RM}$			4V	8V	16V
	Current Reduction Rate Above 25°C	$\Delta I_F$			0.50mA/°C		
	Ambient Temperature Range				-25° ~ +50°C		

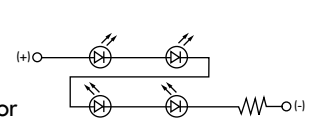
AT627  
5-volt  
4-element  
with Resistor




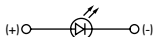
AT627  
12-volt  
4-element  
with Resistor



AT627  
24-volt  
4-element  
with Resistor



### Super Bright Single Element LED

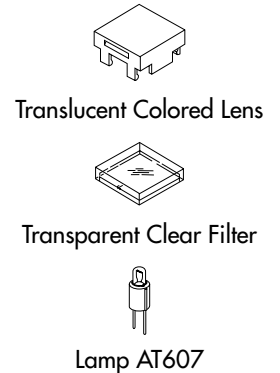
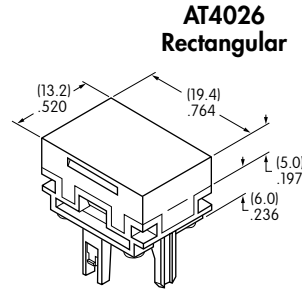
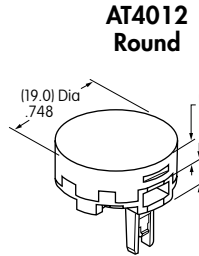
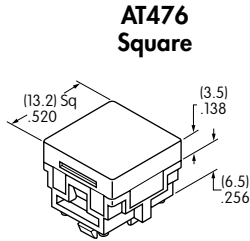
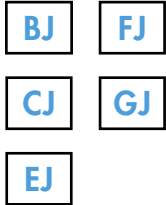
		Attention Electrostatic Sensitive Devices			6B	6F	6G
		Color	White	Green	Blue		
<b>AT625G Blue</b> <b>AT631B White</b> <b>AT632F Green</b>     T-1 Bi-pin	Forward Peak Current	$I_{FM}$	30mA	30mA	30mA		
	Continuous Forward Current	$I_F$	20mA	20mA	20mA		
	Forward Voltage	$V_F$	3.6V	3.5V	3.6V		
	Reverse Peak Voltage	$V_{RM}$	5V	5V	5V		
	Current Reduction Rate Above 25°C	$\Delta I_F$	0.50mA/°C				
	Ambient Temperature Range		-25° ~ +50°C				

## CAP TYPES & COLOR COMBINATIONS

Color Codes: **B** White **C** Red **D** Amber **E** Yellow **F** Green **G** Blue **J** Clear

### Solid Cap for Incandescent Lamp

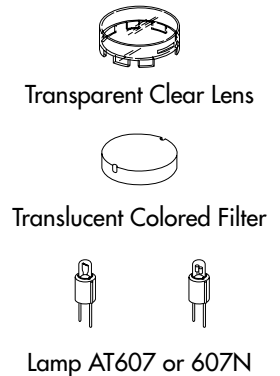
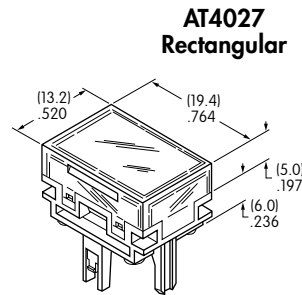
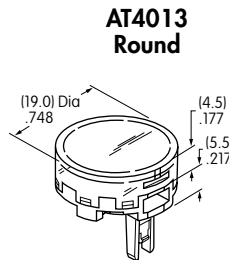
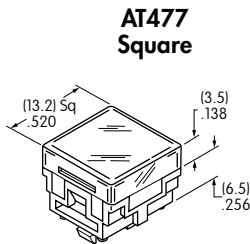
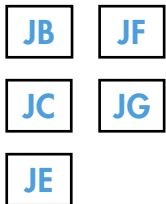
Lens/Filter  
Colors Available:



Material: Polycarbonate Finish: Glossy

### Insert Cap for Incandescent or Neon Lamp

Lens/Filter  
Colors Available:

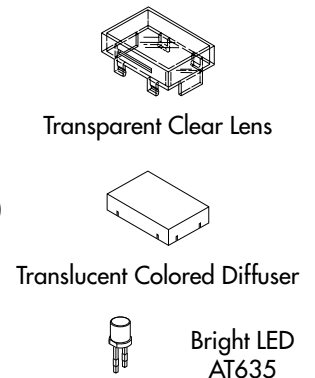
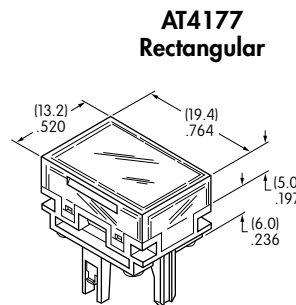
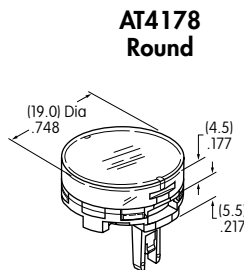
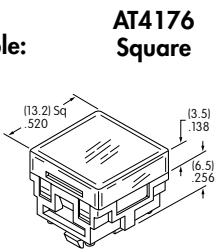


JF and JG not suitable with neon lamp.

Material: Polycarbonate Finish: Glossy

### Cap for Bright LED without Resistor

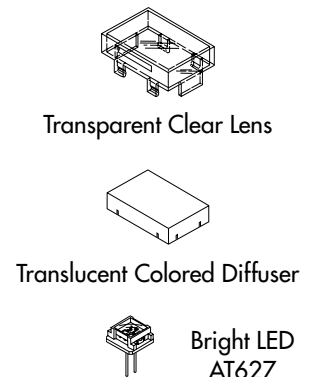
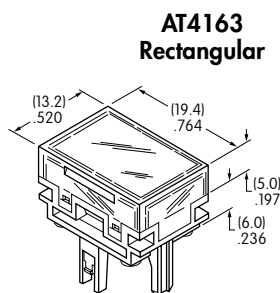
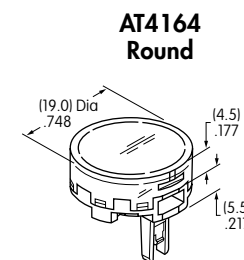
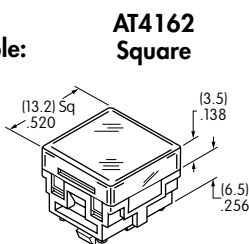
Lens/Diffuser  
Colors Available:



Material: Polycarbonate Finish: Glossy

### Cap for Bright LED with Resistor

Lens/Diffuser  
Colors Available:



Material: Polycarbonate Finish: Glossy

### CAP TYPES & COLOR COMBINATIONS

Cap for Super Bright LEDs

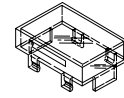
**JB**

Clear Lens  
White Diffuser

**AT4129**  
Square

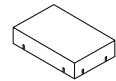
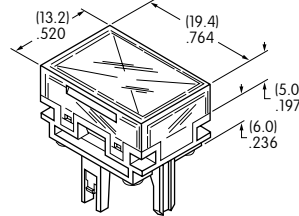
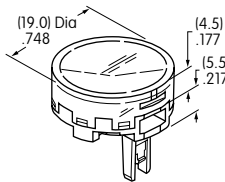
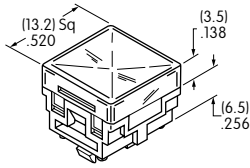
**AT4128**  
Round

**AT4130**  
Rectangular



Transparent  
Clear Lens

Material:  
Polycarbonate  
Finish: Glossy



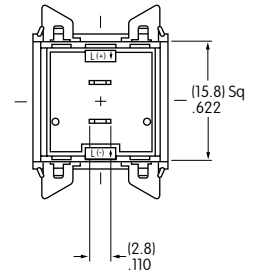
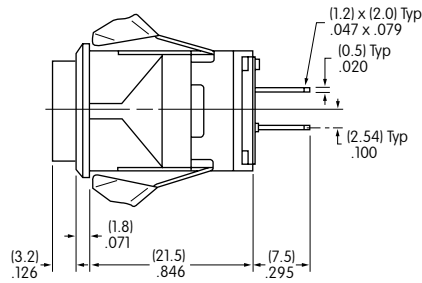
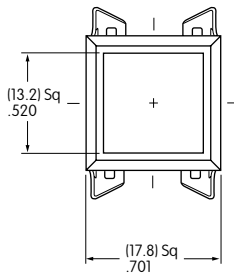
Translucent  
White Diffuser



LEDs AT625  
AT631 AT632

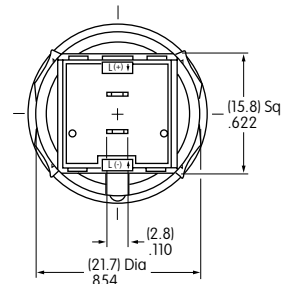
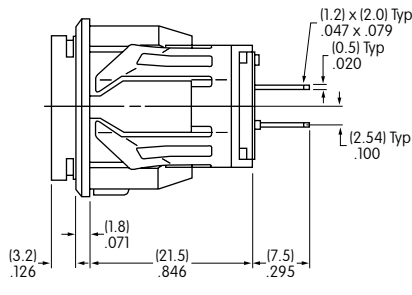
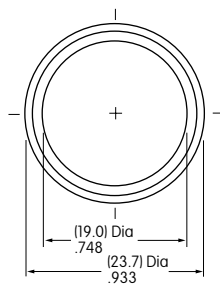
### TYPICAL INDICATOR DIMENSIONS

#### Square



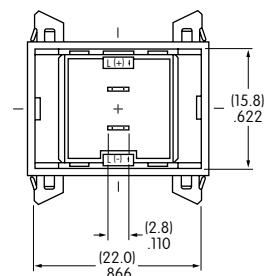
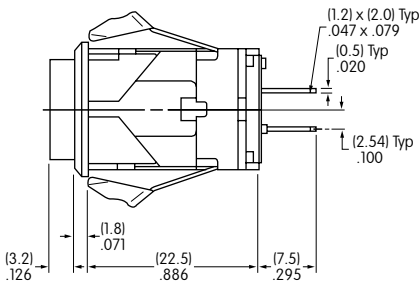
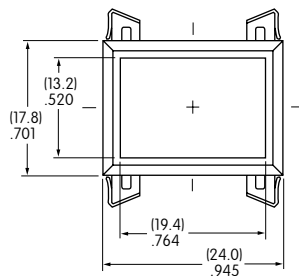
LB01KW01-12-CJ

#### Round



LB02KW01-12-CJ

#### Rectangular



LB03KW01-12-CJ